

AOU18RLXFW Submittal



ASU18RLF

Inverter Driven Heat Pump

Job Name: _____
 Location: _____
 Engineer: _____
 Submitted to: _____
 Submitted by: _____
 Reference: _____

Approval: _____
 Date: _____
 Construction: _____
 Unit #: _____
 Drawing #: _____

Outdoor Unit Power	208-230/VAC-1Ph-60Hz
Available Voltage Range	187-253VAC
Fuse Size, Max.	20A
MCA	17A

Compressor	Inverter Driven Variable Speed DC Rotary
No. used	1
Output	2,100W
Lubrican Oil	POE (RB68)

Fan type	Propeller
Motor Output	100W
Airflow rate	Cooling/Heating (High) 1489 / 2530CFM

Refrigerant	R410A
Outdoor unit	4lbs 10.1oz
Control	Electronic Expansion Valve
O.D. Discharge (in)	3/8"(Flare)
O.D Suction (in)	5/8"(Flare)

Dimensions	H x W x D	
Uncrated (in)	32-3/4 x 35-3/8 x 13	
(mm)	(830 x 900 x 330)	
Crated (in)	38-1/4 x 41-1/2 x 17-1/2	
(mm)	(970 x 1050 x 445)	

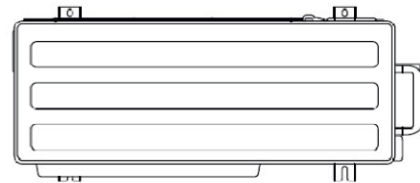
Weight	Outdoor
Net	135lbs (61kg)
Gross Shipping	150lbs (68kg)

Cooling	
Rated Capacity	18,000BTU/h
Min-Max Capacity	7,000~23,000BTU/h
Rated Power Input	1.35kW
Max. Power Input	3.01kW
SEER	19.2
EER	13.3
Outdoor Sound Rating	47dB

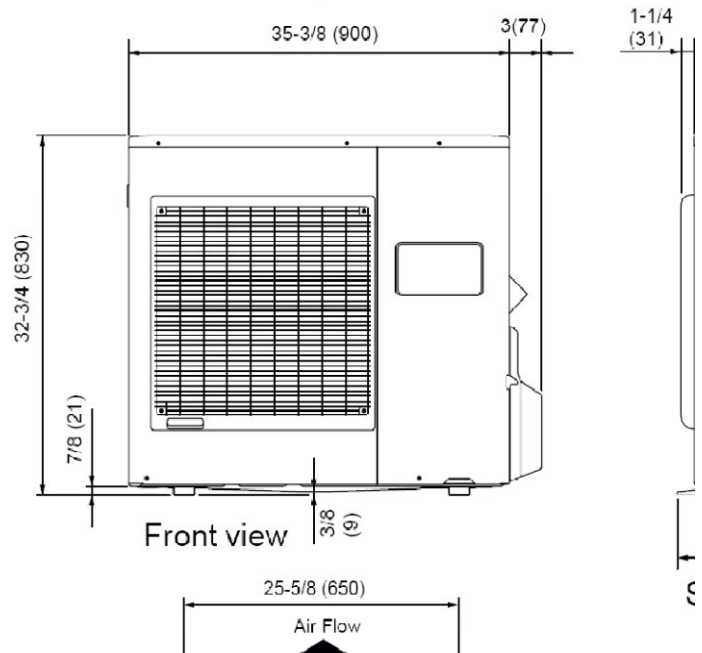
Heating	
Rated Capacity	21,600BTU/h
Min-Max Capacity	7,500~31,000BTU/h
Rated Power Input	1.80kW
Max. Power Input	3.01kW
HSPF	10.0
EER	12.0
Outdoor Sound Rating	50dB

Piping Lengths	
Max. Piping Length (Total)	164ft
Max. Pipe Height Difference	98ft
Connection method	(Flared)

Operating Range	
Cooling	14°F~115°F DB
Heating	5°F~75°F DB



Top view



Front view

Fujitsu General America, Inc.
 Fairfield, NJ 07004
 Toll Free: 1-888-888-3424
 Fax: (973) 836-0447
 www.fujitsugeneral.com

Fujitsu products are subject to continuous improvements. Fujitsu reserves the right to modify product design, specifications and information in this data sheet without notice and without incurring any obligations.

Note: Specifications are based on the following conditions.

Power source of specifications : 230V

Cooling: Indoor temperature of 80°F(26.67°C)DB / 67°F(19.44°C)WB, and outdoor temperature of 95°F(35°C)DB/75°F(23.89°C)WB.

Heating: Indoor temperature of 70°F(21.11°C)DB / 60°F(15.56°C)WB, and outdoor temperature of 47°F(8.33°C)DB/43°F(6.11°C)WB.

Pipe length : 24ft. 7in.(7.5m),Height difference : 0 ft.(0m) [Outdoor unit - Indoor unit]



Indor Unit

Model ASU18RLF
Power 208-230/VAC-1Ph-60Hz
Available Voltage Range 187-253VAC



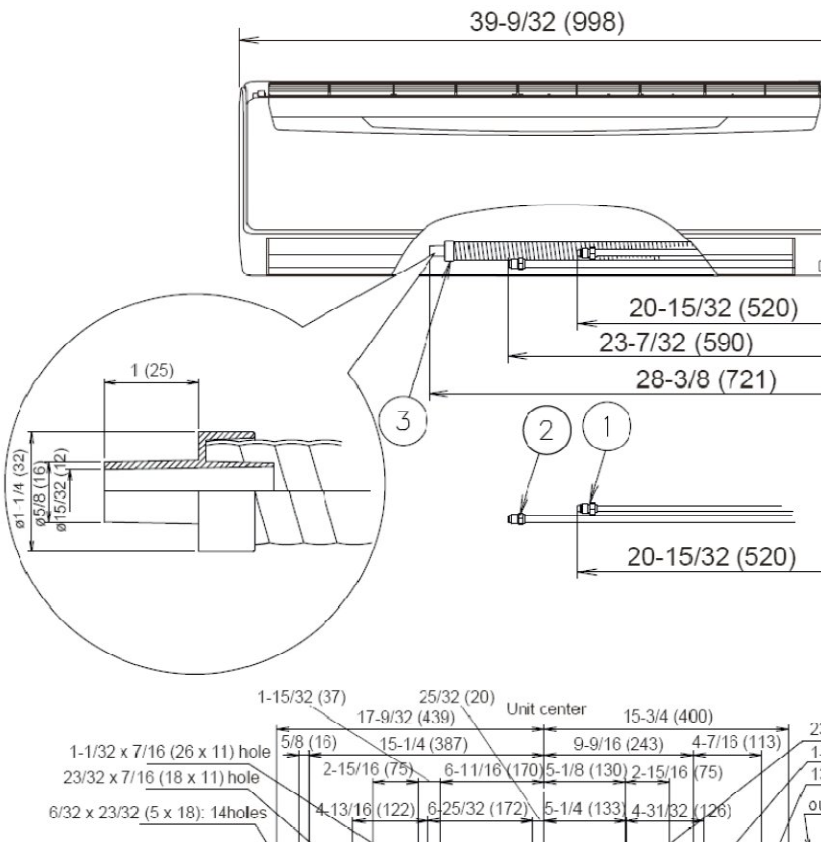
Fan
Type Cross flow
Motor Output 64W
MCA 0.3A

Sound pressure level
Cooling Lo-Hi 28-43dB
Heating Lo-Hi 28-44dB

Airflow rate
Cooling Lo-Hi 306-541 CFM
Heating Lo-Hi 318-541CFM

Dimensions H x W x D
Uncrated (in) 12-5/8 x 39-1/4 x 9
 (mm) (320 x 998 x 228)
Crated (in) 12-3/5 x 42-15/16 x 16-7/8
 (mm) (319 x 1090 x 429)

Weight Indoor
Net 31lbs (8kg)
Gross Shipping 40lbs (10.5kg)



Fujitsu General America, Inc.
 Fairfield, NJ 07004
 Toll Free: 1-888-888-3424
 Fax: (973) 836-0447
 www.fujitsugeneral.com

Fujitsu products are subject to continuous improvements. Fujitsu reserves the right to modify product design, specifications and information in this data sheet without notice and without incurring any obligations.

